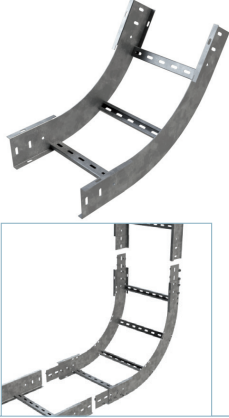


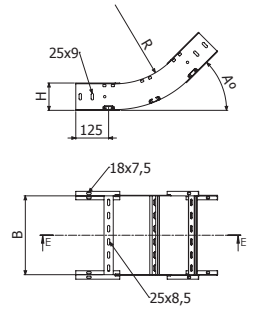


CCFE30-300



| | A | | R | | B | | H | | GC | |
|-----------------------|----|-----|------|-----|------|----|--------|---------|-------|--|
| | ° | mm | inch | mm | inch | mm | inch | REF. | kg/ud | |
| CCFE30-300 100X60X1.5 | 30 | 300 | 12" | 100 | 4" | 63 | 2 1/2" | 2/17669 | 1,14 | |
| CCFE30-300 150X60X1.5 | 30 | 300 | 12" | 150 | 6" | 63 | 2 1/2" | 2/17670 | 1,23 | |
| CCFE30-300 200X60X1.5 | 30 | 300 | 12" | 200 | 8" | 63 | 2 1/2" | 2/17671 | 1,33 | |
| CCFE30-300 300X60X1.5 | 30 | 300 | 12" | 300 | 12" | 63 | 2 1/2" | 2/17672 | 1,51 | |
| CCFE30-300 400X60X1.5 | 30 | 300 | 12" | 400 | 16" | 63 | 2 1/2" | 2/17673 | 1,69 | |
| CCFE30-300 500X60X1.5 | 30 | 300 | 12" | 500 | 20" | 63 | 2 1/2" | 2/17674 | 1,87 | |
| CCFE30-300 600X60X1.5 | 30 | 300 | 12" | 630 | 24" | 63 | 2 1/2" | 2/17619 | 3,08 | |

2 x JUFE

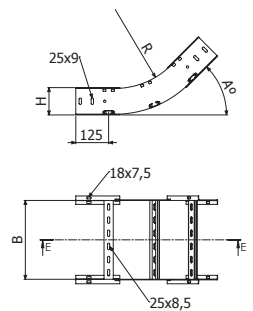


CCFE45-300

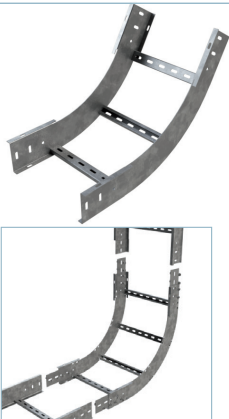


| | A | | R | | B | | H | | GC | |
|-----------------------|----|-----|------|-----|------|----|--------|---------|-------|--|
| | ° | mm | inch | mm | inch | mm | inch | REF. | kg/ud | |
| CCFE45-300 100X60X1.5 | 45 | 300 | 12" | 100 | 4" | 63 | 2 1/2" | 2/17675 | 2,05 | |
| CCFE45-300 150X60X1.5 | 45 | 300 | 12" | 150 | 6" | 63 | 2 1/2" | 2/17676 | 1,36 | |
| CCFE45-300 200X60X1.5 | 45 | 300 | 12" | 200 | 8" | 63 | 2 1/2" | 2/17677 | 1,49 | |
| CCFE45-300 300X60X1.5 | 45 | 300 | 12" | 300 | 12" | 63 | 2 1/2" | 2/17678 | 1,63 | |
| CCFE45-300 400X60X1.5 | 45 | 300 | 12" | 400 | 16" | 63 | 2 1/2" | 2/17679 | 1,9 | |
| CCFE45-300 500X60X1.5 | 45 | 300 | 12" | 500 | 20" | 63 | 2 1/2" | 2/17680 | 2,18 | |
| CCFE45-300 600X60X1.5 | 45 | 300 | 12" | 630 | 24" | 63 | 2 1/2" | 2/17681 | 2,45 | |

2 x JUFE

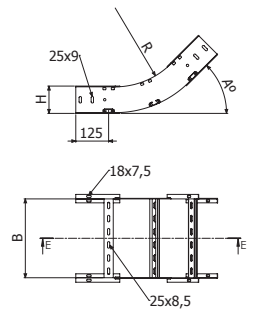


CCFE60-300

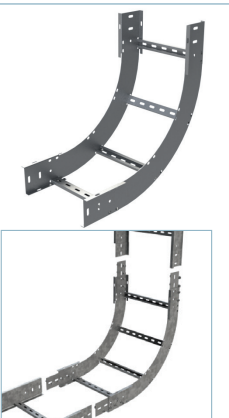


| | A | | R | | B | | H | | GC | |
|-----------------------|----|-----|------|-----|------|----|--------|---------|-------|--|
| | ° | mm | inch | mm | inch | mm | inch | REF. | kg/ud | |
| CCFE60-300 100X60X1,5 | 60 | 300 | 12" | 100 | 4" | 63 | 2 1/2" | 2/17683 | 1,49 | |
| CCFE60-300 150X60X1,5 | 60 | 300 | 12" | 150 | 6" | 63 | 2 1/2" | 2/17684 | 1,62 | |
| CCFE60-300 200X60X1,5 | 60 | 300 | 12" | 200 | 8" | 63 | 2 1/2" | 2/17685 | 1,76 | |
| CCFE60-300 300X60X1,5 | 60 | 300 | 12" | 300 | 12" | 63 | 2 1/2" | 2/17686 | 2,03 | |
| CCFE60-300 400X60X1,5 | 60 | 300 | 12" | 400 | 16" | 63 | 2 1/2" | 2/17687 | 2,31 | |
| CCFE60-300 500X60X1,5 | 60 | 300 | 12" | 500 | 20" | 63 | 2 1/2" | 2/17688 | 2,58 | |
| CCFE60-300 600X60X1,5 | 60 | 300 | 12" | 630 | 24" | 63 | 2 1/2" | 2/17689 | 2,85 | |

2 x JUFE



CCFE-300



| | A | | R | | B | | H | | GC | |
|---------------------|----|-----|------|-----|------|----|--------|---------|-------|--|
| | ° | mm | inch | mm | inch | mm | inch | REF. | kg/ud | |
| CCFE-300 100X60X1,5 | 90 | 300 | 12" | 100 | 4" | 63 | 2 1/2" | 2/17690 | 1,83 | |
| CCFE-300 150X60X1,5 | 90 | 300 | 12" | 150 | 6" | 63 | 2 1/2" | 2/17691 | 2,01 | |
| CCFE-300 200X60X1,5 | 90 | 300 | 12" | 200 | 8" | 63 | 2 1/2" | 2/17692 | 2,2 | |
| CCFE-300 300X60X1,5 | 90 | 300 | 12" | 300 | 12" | 63 | 2 1/2" | 2/17693 | 2,56 | |
| CCFE-300 400X60X1,5 | 90 | 300 | 12" | 400 | 16" | 63 | 2 1/2" | 2/17694 | 2,92 | |
| CCFE-300 500X60X1,5 | 90 | 300 | 12" | 500 | 20" | 63 | 2 1/2" | 2/17695 | 3,29 | |
| CCFE-300 600X60X1,5 | 90 | 300 | 12" | 630 | 24" | 63 | 2 1/2" | 2/17696 | 3,65 | |

2 x JUFE

